

**Primary Issues
Underlying Health
Outcomes in
Older Adults
with HIV**

Rehabilitation in the US

Stephen Karpiak PhD

Senior Director for Research and Evaluation
AIDS Community Research Initiative of America (ACRIA)
New York, NY

AIDS Community Research Initiative of America (ACRIA)
ACRIA Center on HIV and Aging NY, NY
And
New York University College of Nursing



HIV Systematically Disadvantages You Across A Life Time

— Lisa Power THT

Epidemiology

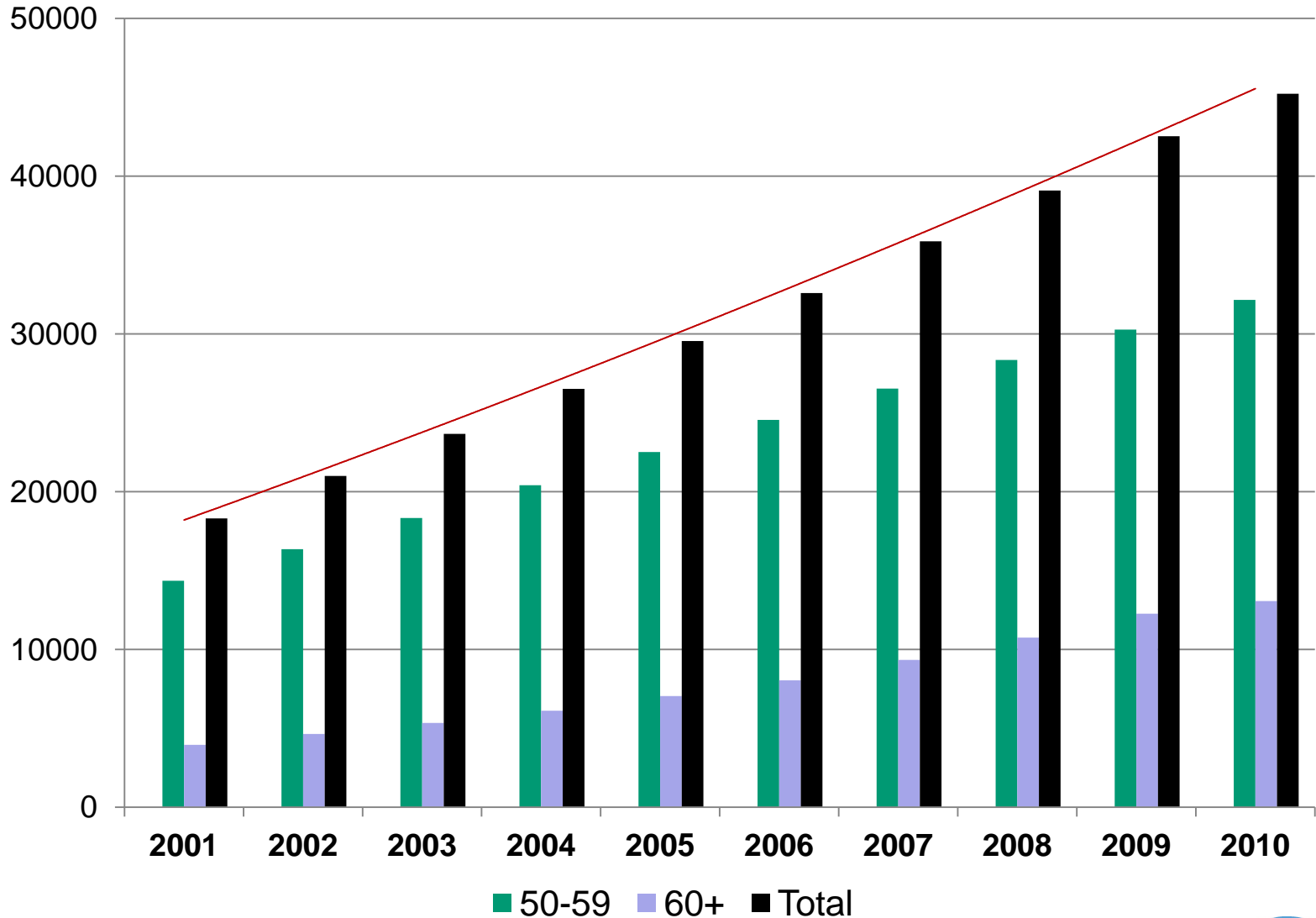
How Did We Get HERE?

HERE?

Where are we going?

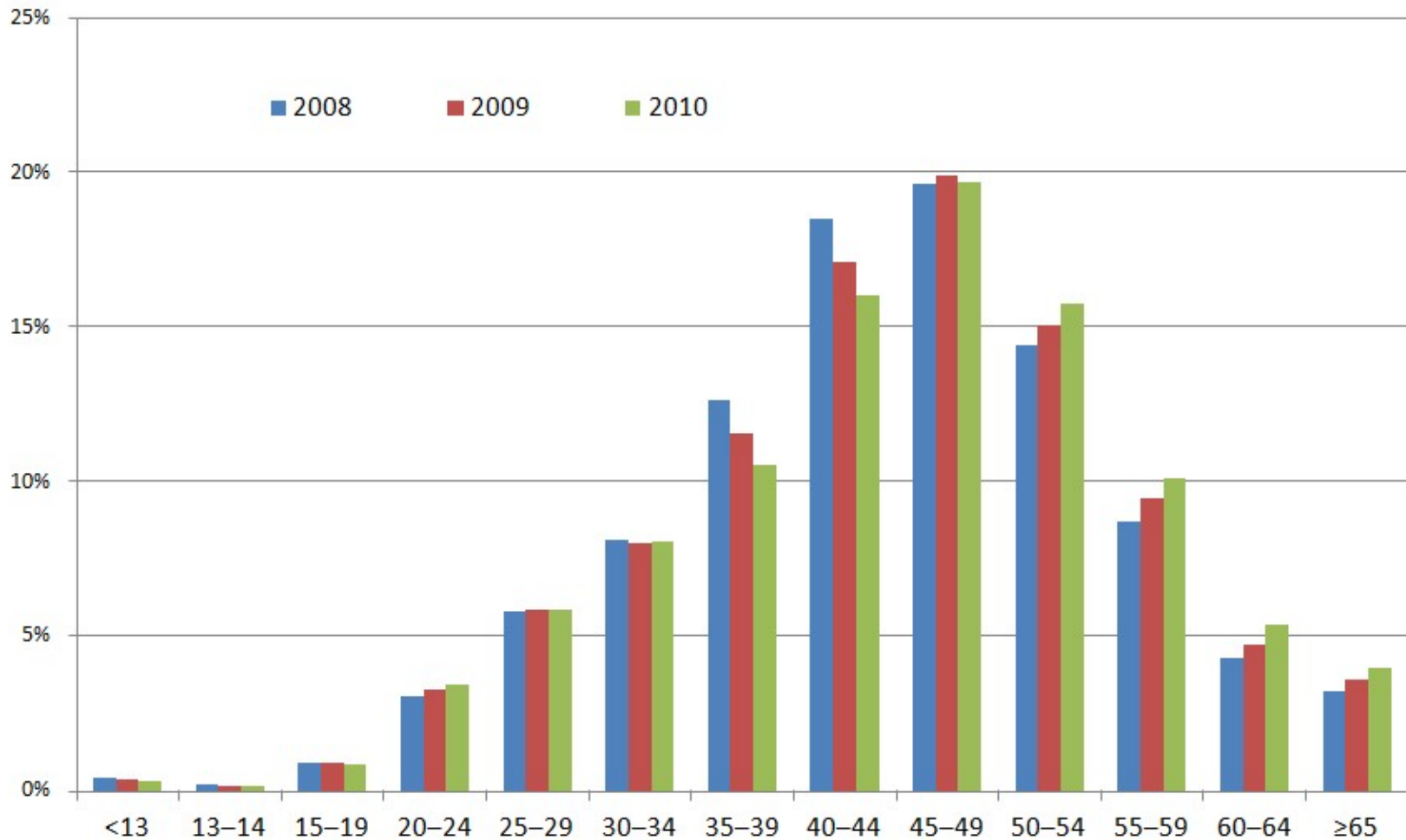
Number PLWH Age 50 and Older NYC

46% Estimate for 2013



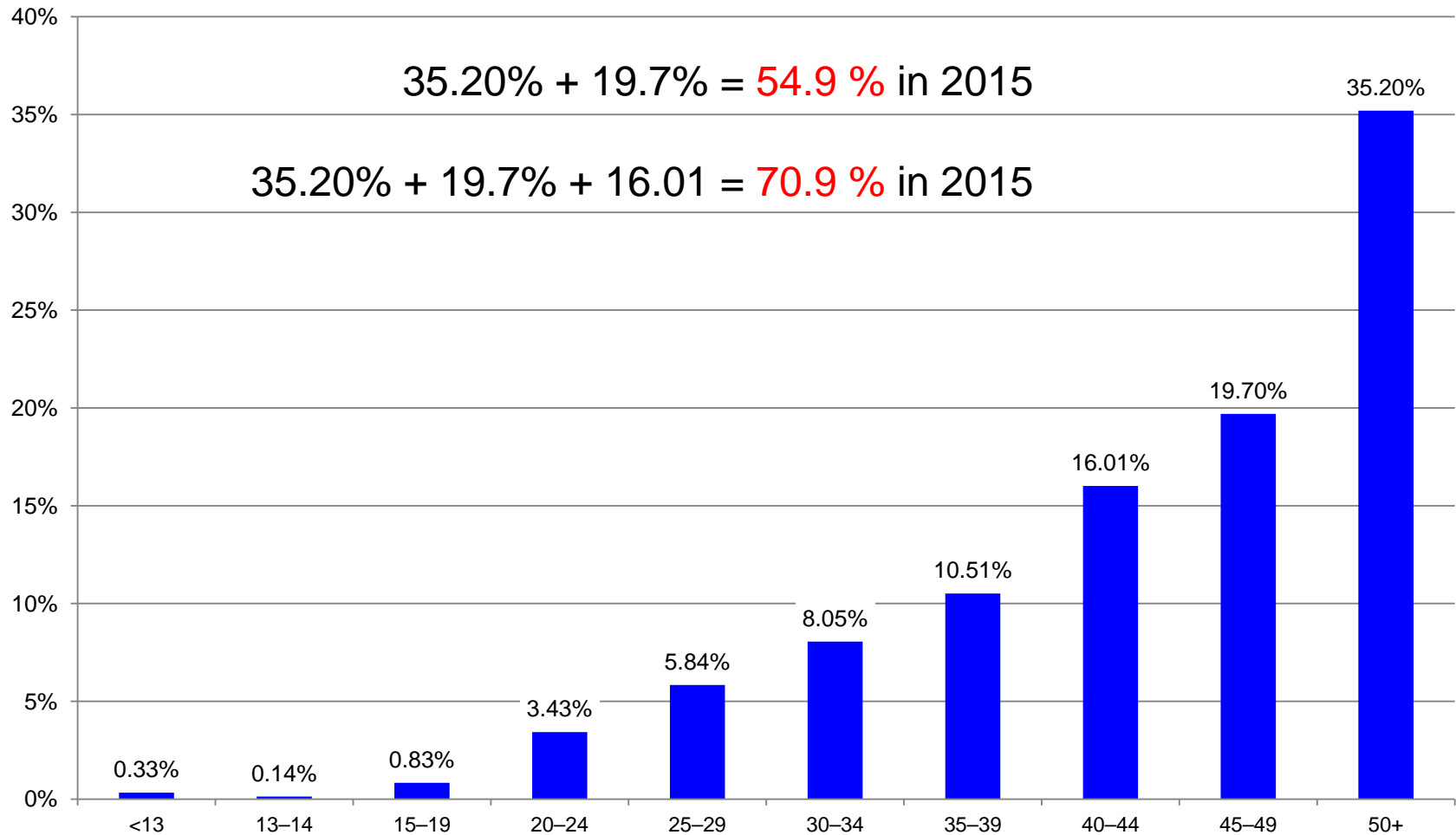
% of All PLWH In the US by Age Group: 2008-2010

CDC Surveillance Data



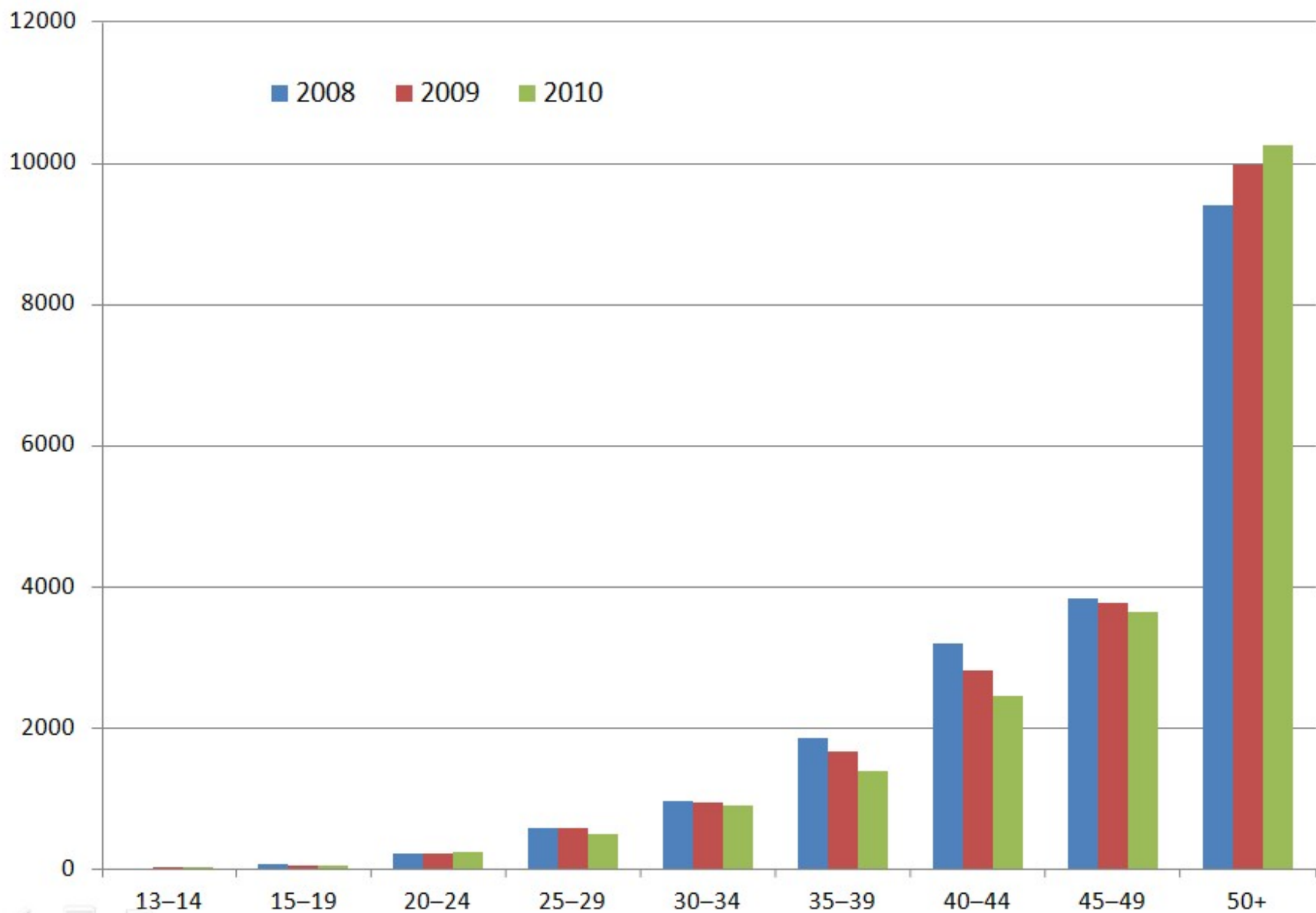
% of all PLWH in the US by Age Group for 2010

CDC Surveillance Data

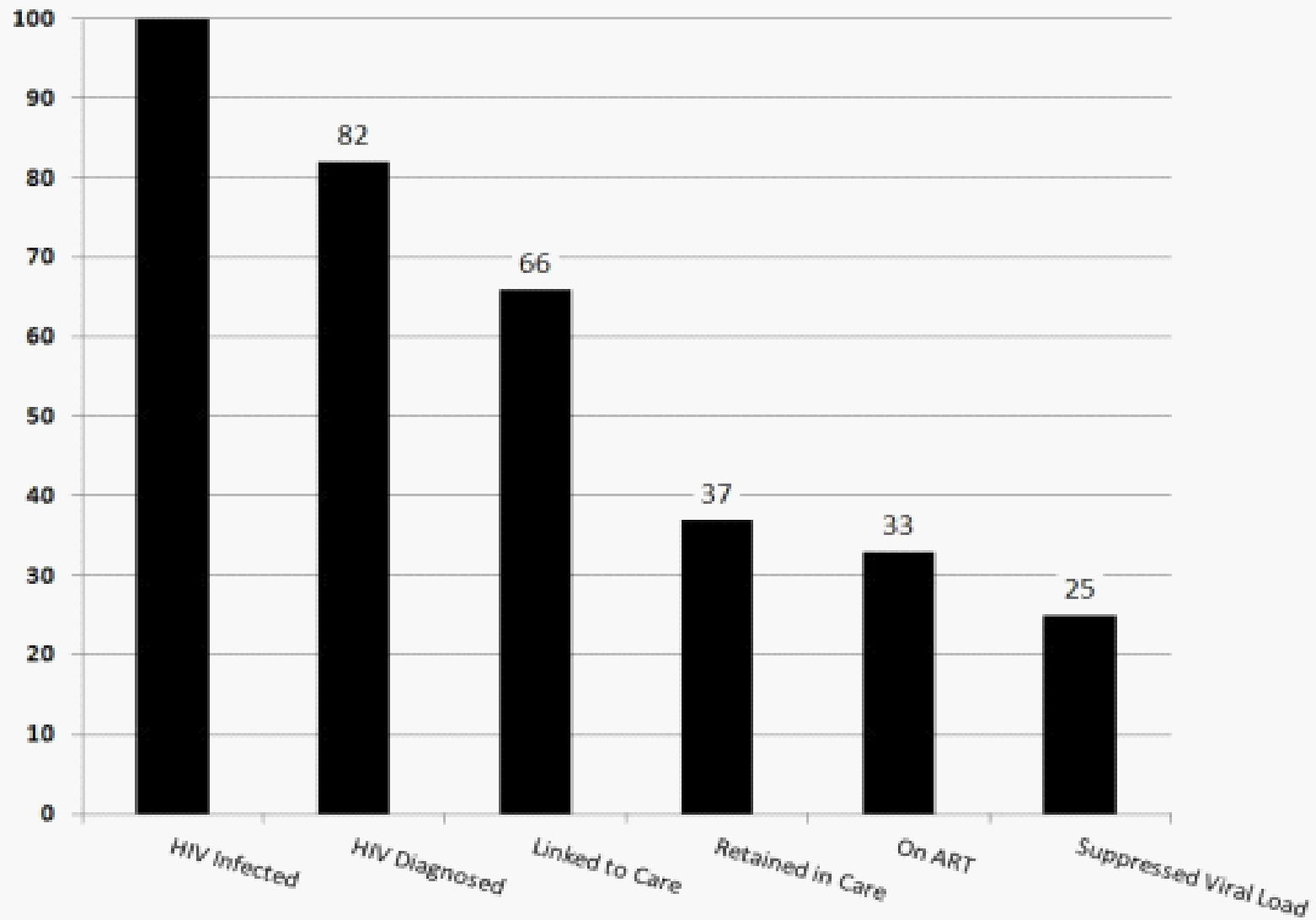


Deaths 2008-2010 for all Age Groups of PLWH

CDC Surveillance Data

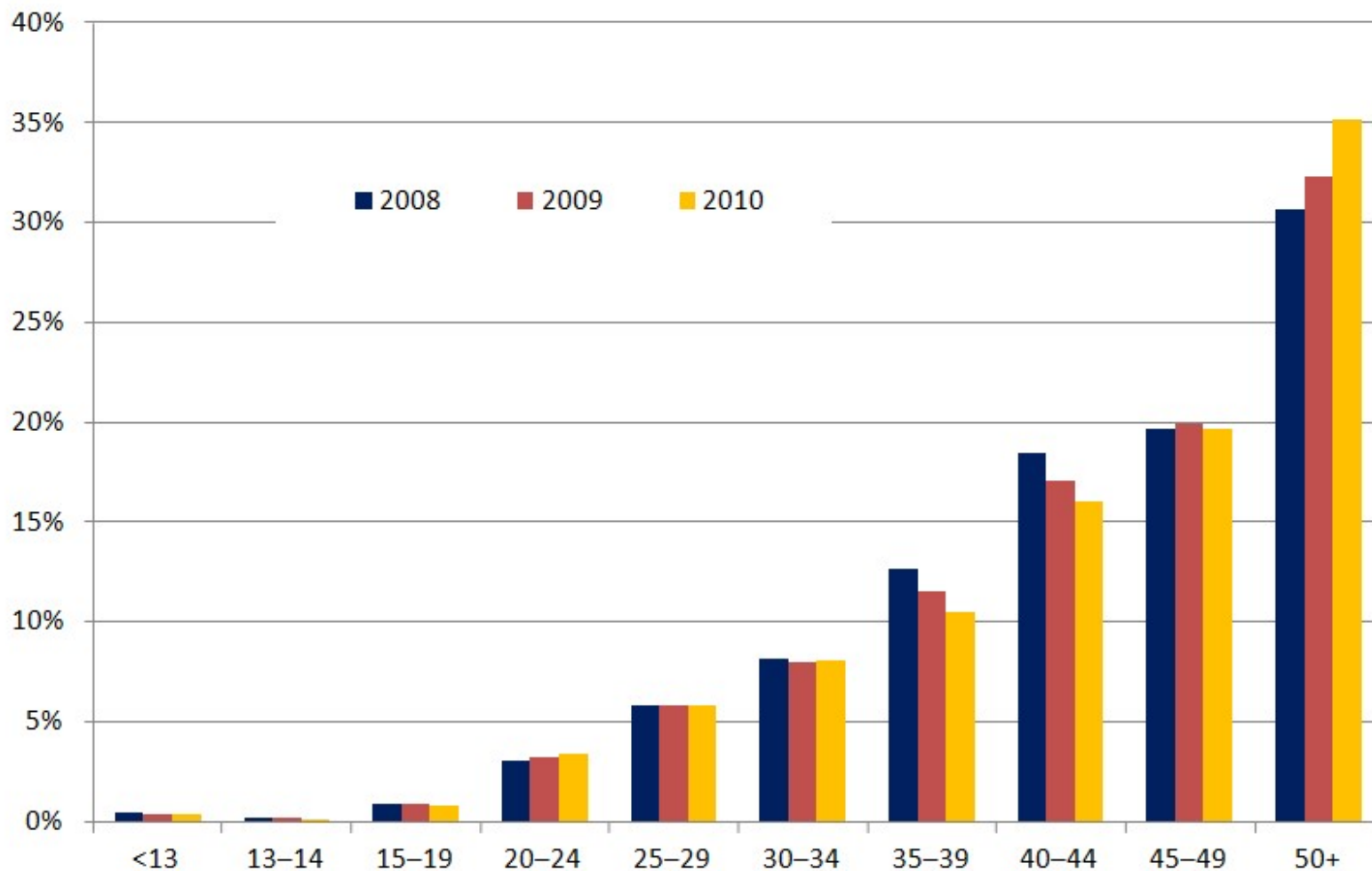


HIV Care Cascade



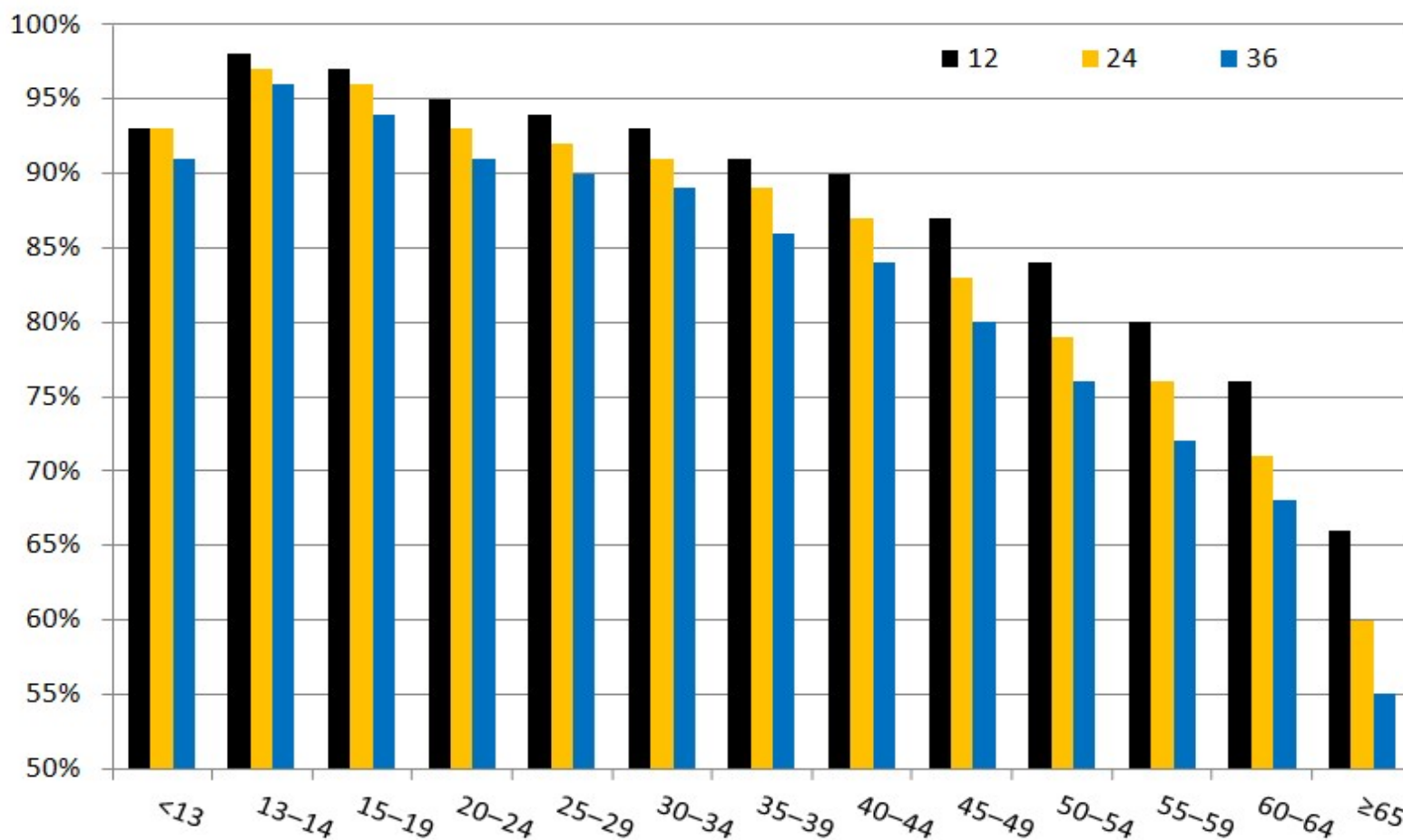
% of All PLWH In the US by Age Group: 2008-2010

CDC Surveillance Data

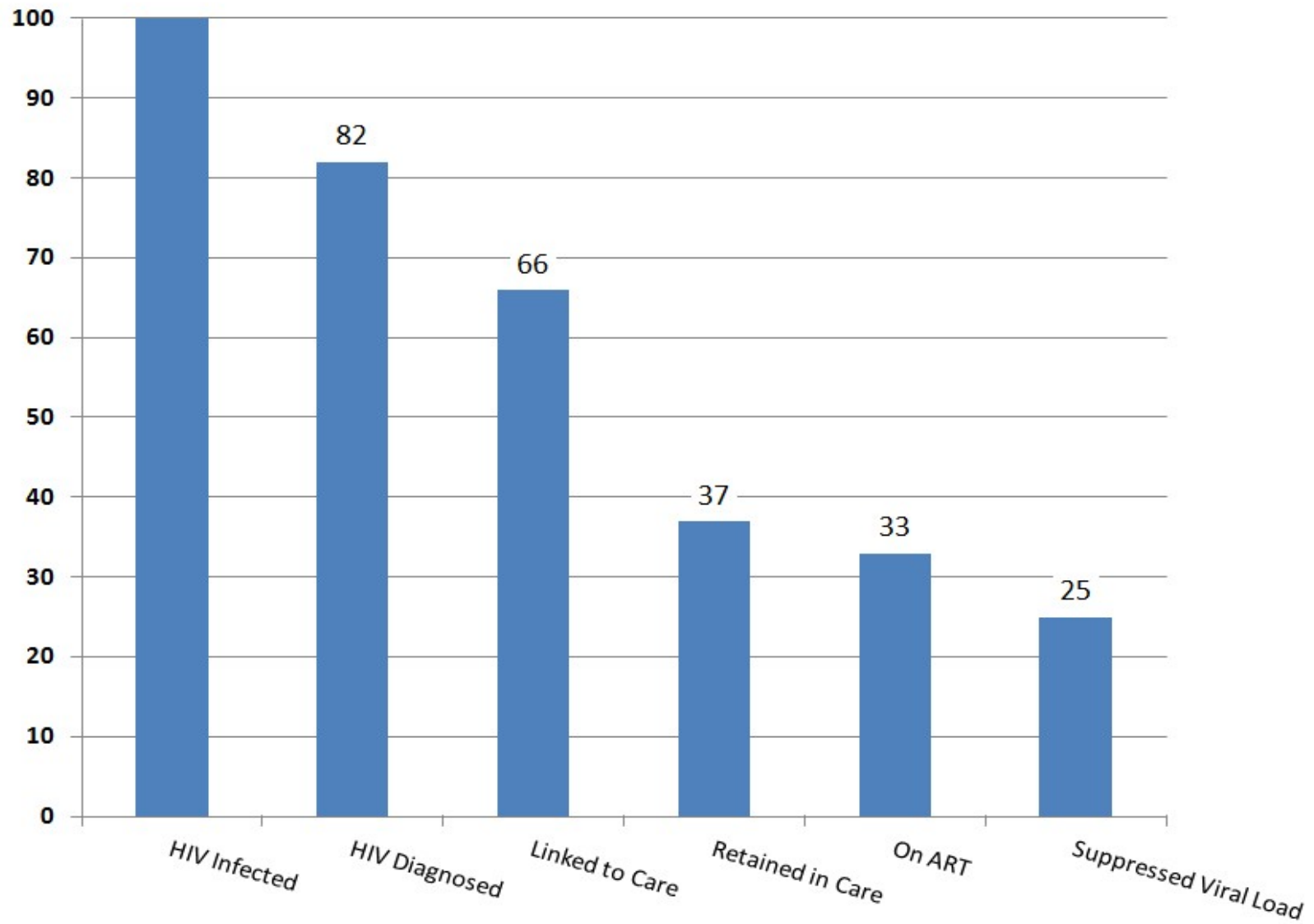


% Surviving at 12,24 and 36 Months after Initial AIDS Diagnosis: 2003-2007

CDC Surveillance Data



HIV Care Cascade



CDC Data July 2012

Hospitalizations of PLWHA 2002-2007

Characteristic	2002	2003	2004	2005	2006	2007
	N =	N=	N=	N=14,92	N=15,12	N=15,36
	14,496	14,714	14,687	3	9	8
	(%)	(%)	(%)	(%)	(%)	(%)
Age (years)						
18–30	1576 (11)	1466 (10)	1478 (10)	1402 (9)	1459 (10)	1437 (9)
31–49	10395 (72)	10430 (71)	10140 (69)	9973 (67)	9728 (64)	9547 (62)
50+	2525 (17)	2818 (19)	3069 (21)	3548 (24)	3942 (26)	4384 (29)

Age-Associated Diseases That Are More Common in Treated HIV Patients than in Age-Matched Uninfected Persons

- ⊙ Cardiovascular disease
- ⊙ Cancers
- ⊙ Bone fractures; osteopenia
- ⊙ Left ventricular dysfunction failure
- ⊙ Liver Failure
- ⊙ Kidney Failure
- ⊙ Frailty
- ⊙ Immune System

Mental Health

Substance Use

Barriers to Services

ACRIA Research

Data were obtained from 180 men and women 50+ with HIV from Gay Men's Health Crisis (GMHC), New York, NY

A Parallel Study was done in Chicago with 135 Older LGBTgbt at the Center on Halstead²

In press J Homosexuality 2013

Accessing Service Barriers

Barriers to Services among Older Adults with HIV by Gender (Valid Percents).			
Service Barrier	Total %	Women %	Men %
Don't Think Services are Available Locally	55.2	68.4	52.6
* Don't Know Where to Go for Services	57.3	77.3	52.9
Would have to Wait Too Long for Services	53.6	57.7	52.5
Unable to Afford Services	51.7	60.9	49.5
Unable to Receive Free Services	55.9	70.8	52.4
Process of Getting Services Too Confusing or Difficult	48.0	50.0	47.5
*** Hard to Get There (Transportation)	32.2	59.1	26.0
* $p < .05$; ** $p < .01$; *** $p < .001$ Chi-square tests of significance.			

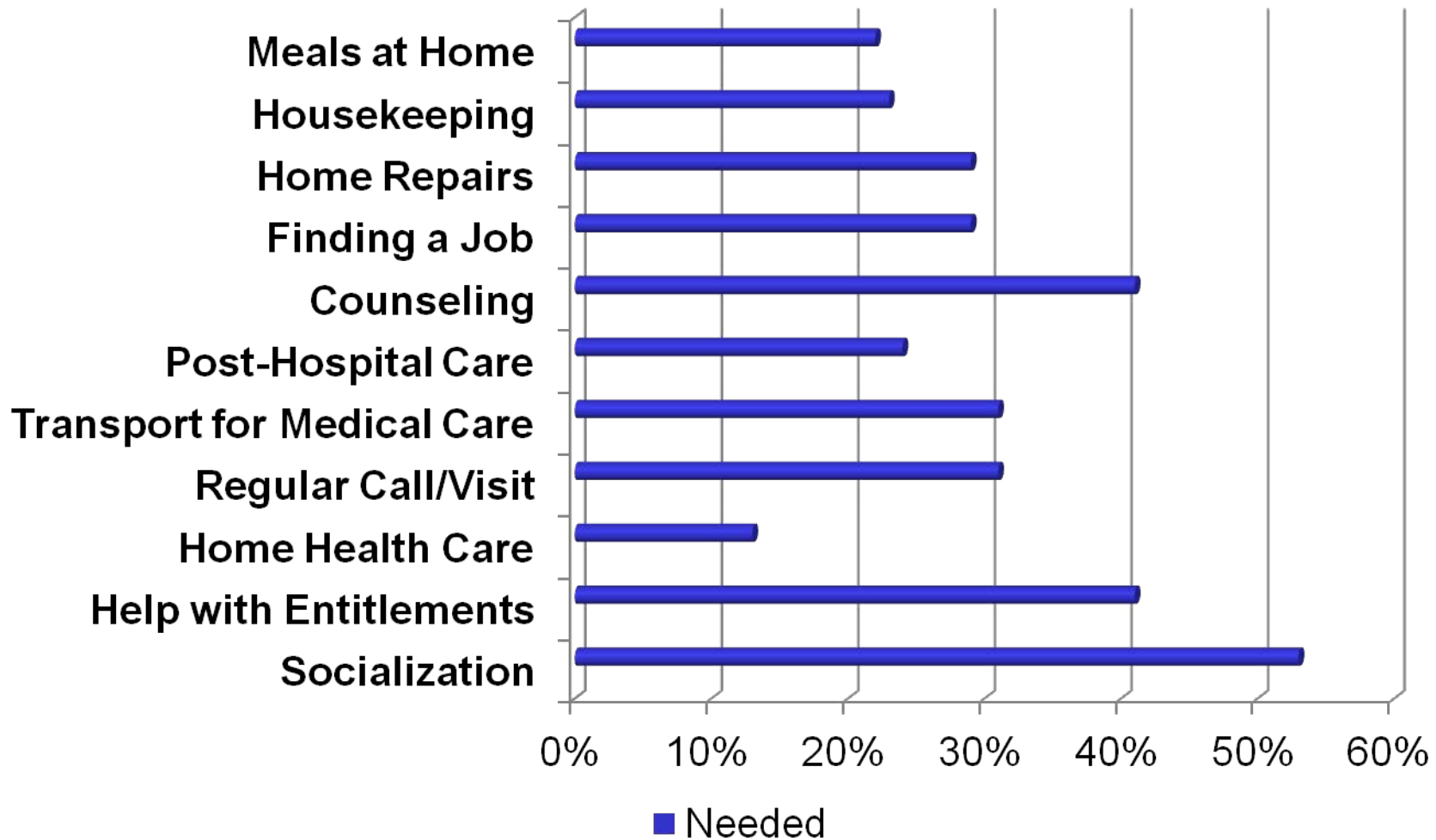
Staff/Organizational Barriers

Barriers to Services among Older Adults with HIV by Gender (Valid Percents).

Service Barrier	Total %	Women %	Men %
** Service Providers Don't Like People Like Me	39.8	65.0	34.1
Afraid Won't Receive Treatment	27.6	42.1	24.4
*** Staff Doesn't Speak the Same Language as Me	22.5	50.0	16.4
* Trouble Expressing Needs to Staff	30.7	50.0	25.0
Staff are Unhelpful or Unmotivated	44.4	50.0	43.0

*** $p < .05$; ** $p < .01$; *** $p < .001$ Chi-square tests of significance.**

Findings on Service Needs



Rehabilitation in the US ?

- Average age of Over 50 population – 56.5
- 85% of all older PLWHA are Medicaid Dependent
- Majority have not been employed FT in 15 years
- Work skills need complete replacement
- Benefits threatened by work
- ACA
 - Navigator positions
 - The power of peers

PCORI

Patient Centered Outcomes Research
Institute

Did you ask the client about
rehabilitation?

Thank you !!

